

# MANUFACTURING STANDARDS



All garments are manufactured  
in ISO 9001 accredited facilities

SHAPED FOR  
WOMEN  
WHO SHAPE  
THE WORLD



# ABOUT

Sisi Safety Wear is a brand of women-specific PPE that falls within the BBF Safety Group (Pty) Ltd stable.

Established in 2008, Sisi Safety Wear was initially developed to provide a solution for women looking for a safety footwear offering that was suited to the contours of a woman's foot. A decade after its launch, the brand successfully expanded its product offering into workwear through its careful consideration of the functional and safety requirements of women working in industry.

The rationale behind the brand and its offering remain as clear today as it was when it started: there is a distinct difference in the anatomy of men and women, and thus the PPE procured should reflect this.

By doing so, women can focus their full attention on the job at hand, increasing their productivity on-site.

# OUR RANGE

## STANDARD CUT CONTI SUITS

Our standard cut is designed to cater for women with standard body shapes. This cut accommodates for a bust size that is typically proportional to the waist area and a derriere that is typically proportional to the hip area.

## EXTENDED CUT CONTI SUITS

We at Sisi understand that most women vary when it comes to body shape and size. This is why we have developed a fit suited to curvier African women. Our extended cut range has been designed to accommodate for a larger bust size that is not typically proportional to the waist area and a larger posterior that is not typically proportionate to the hip area. This range further features a longer length jacket and higher waisted trousers to prevent exposure of the back and midriff areas when the wearer is raising their arms or bending over.

## MATERNITY CUT

During pregnancy, women experience changes to the shape of their bodies. Standard conti suits often become tight and uncomfortable, as the shape of a woman's body changes. We have created a first-to-market, maternity cut especially for pregnant women in industry. This cut features a jacket with an extended front and sides, accommodating for a growing bust and belly area, as well as trousers with a cotton-knit insert at the side seams and a broad knitted cotton waist band, providing increased comfort for a growing belly.

# FEATURES



## VIZLITE™:

Our Reflective and Tri-reflect ranges are constructed utilising VizLite™ Dual Technology, the leaders in reflective tapes. VizLite™ is certified to EN 20471:2013 and ANSI 107:2015 international standards for high visibility clothing.

## BENEFITS OF USING VIZLITE™ DUAL TECHNOLOGY:

- Added level of bright phosphorescent visibility in low or no light conditions
- Charged by exposure to daylight or artificial light within minutes and lasts up to 8 hours
- Environmentally-friendly and certified to Oeko-Tex Standard 100
- Works when submerged under water

## YKK ZIPPERS:

Sisi Safety Wear makes use of YKK Zippers, a global leader in fastening products. This quality selection improves the durability of the garments, enhancing their longevity. YKK Zippers conform to SANS 1822 standards.



## WASH ALLOWANCE:

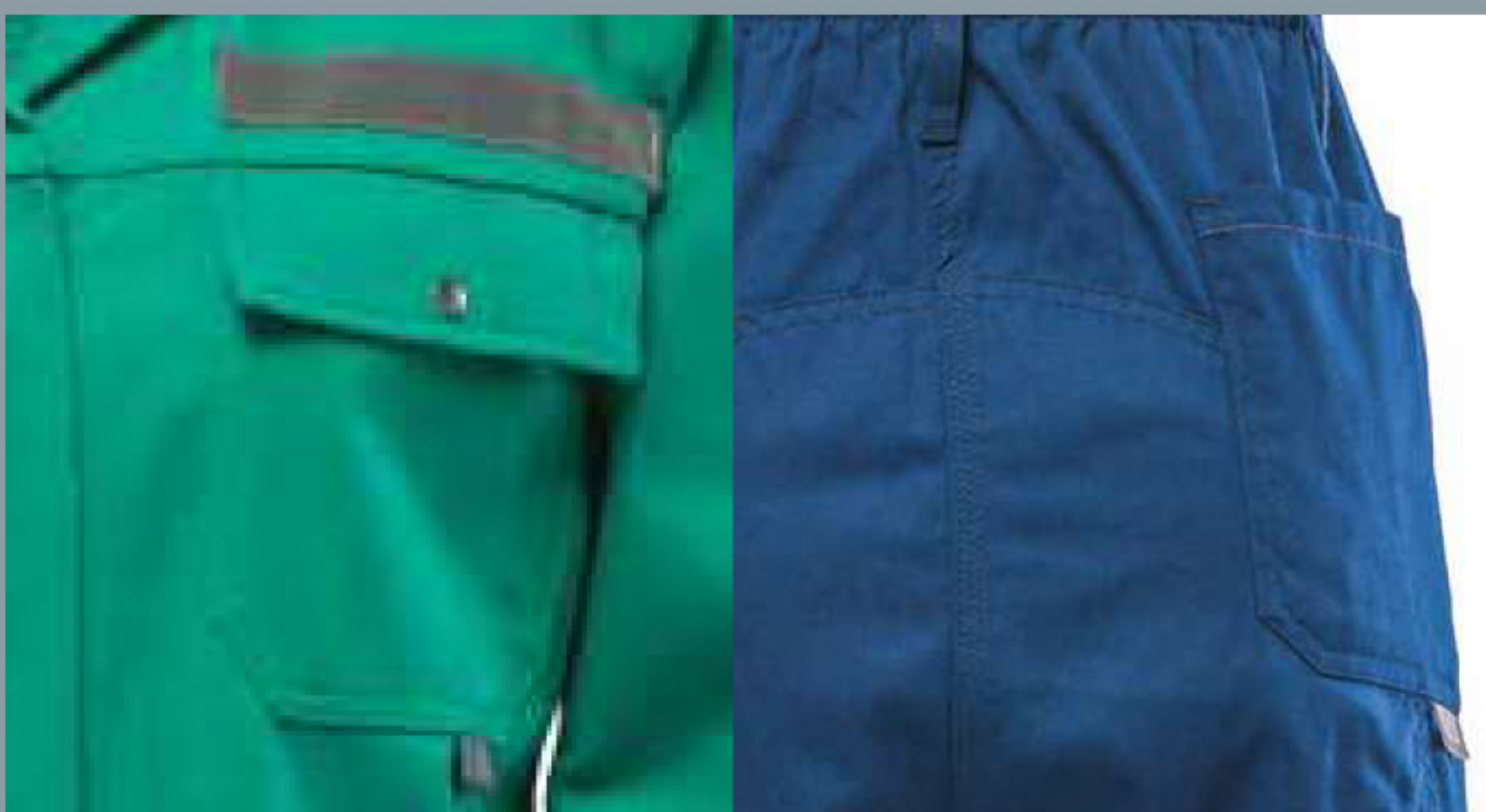
All garments within our range have been manufactured with an additional 3% shrinkage allowance to withstand regular washes, thereby enhancing the longevity of the garments.

## ELASTICATED WAIST BAND:

This feature provides flexibility and comfort to the wearer, enabling them to move freely while at work, without the restrictions of a belt.

## RULER AND PEN DIVISION:

Many of the garments within our range feature a pen and/or a ruler pocket division for enhanced convenience.



## POCKETS:

Garment dependent, our range features the following pocket constructions:

### TROUSERS AND BOILER SUITS

- Swing pockets
- Laid on pockets
- Hip pocket
- Ruler pocket

### JACKETS

- Large front pockets
- Press stud breast pockets
- Side entry pockets

# FEATURES

## STITCHING:

- All our garments have been constructed with triple stitched seams throughout, to ensure enhanced durability of our products.
- All pockets have been double stitched with bar tacked stress points for added strength and improved storage capabilities.



## CUFFS:

Garment dependent, our range features the following cuff constructions:

- Elasticated
- Velcro adjustable

## SIDE SLITS:

This feature has been designed to enhance the flexibility and movement of the wearer. It further prevents the wearer's jacket from bunching around the hip, allowing for better comfort whilst working.



## DURAFIT:

Sisi has created a range of safety wear garments with added padding in the seat area. Our Durafit range offers enhanced comfort to the wearer, as well as improved durability to the garments.

## BOILER SUIT BACK FLAP:

We understand women's need for dignity and respect in the workplace. Therefore we have created a first-to-market back flap on our boiler suit for easy removal so as to avoid undressing completely when using the lavatory whilst on-site.



# FABRICS

All 100% cotton garments within the Sisi work wear range are manufactured using fabrics sourced from Da Gama Textiles, one of the largest and most established consolidated textile producers in South Africa. Sisi is proudly dedicated to working with Da Gama Textiles to supply quality women's work wear made from SABS-approved fabrics to various sectors, parastatals, wholesale distributors and the like.

## 65/35 POLY COTTON:

This fabric comprises 35% cotton and 65% polyester. Cotton is a natural fibre that is known for its breathability, while polyester is a man-made fibre that is known for its resilience and washability. When polyester is blended with cotton, the resultant fabric offers better crease resistance, enhancing comfort and durability.

## J54:

This fabric is made from 100% cotton and is SABS-approved. As a natural fibre, cotton is soft, highly breathable and acts as an insulator. The benefit of this fabric is that the wearer will remain cool in the summer months and warm in winter, thereby improving her comfort level.

## D59:

This fabric is made from 100% cotton and is SABS-approved. The fabric is treated with either an acid resistant or flame retardant or both acid resistant and flame retardant finish, depending on the wearer's requirements.

# TREATMENTS

## FLAME RETARDANT:

Our flame retardant range is chemically treated to ensure that the material has the ability to self-extinguish upon the removal of an ignition source, such as a flame or spark.

# CONTENTS

## STANDARD FIT

Standard Work Jacket - 65/35 Poly Cotton pg 8

Standard Work Trousers - 65/35 Poly Cotton pg 9

Tri-reflect Work Jacket - 65/35 Poly Cotton pg 10

Tri-reflect Work Trousers - 65/35 Poly Cotton pg 11

## EXTENDED FIT

Reflective Work Jacket - J54 100% Cotton pg 12

Durafit Reflective Work Trousers - J54 100% Cotton pg 13

Reflective Work Jacket - D59 100% Cotton Flame Retardant pg 14

Durafit Reflective Work Trousers - D59 100% Cotton Flame Retardant pg 15

Reflective Work Jacket - D59 100% Cotton Flame Retardant & Acid Resistant pg 16

Reflective Work Trousers - D59 100% Cotton Flame Retardant & Acid Resistant pg 17

## MATERNITY FIT

Maternity Tri-reflect Work Jacket - J54 100% Cotton pg 18

Maternity Tri-reflect Work Trousers - J54 100% Cotton pg 19

## BOILER SUITS

Durafit Reflective Boiler Suit - J54 100% Cotton pg 20

Size Chart pg 21

Colour Legend pg 22

Notes pg 23

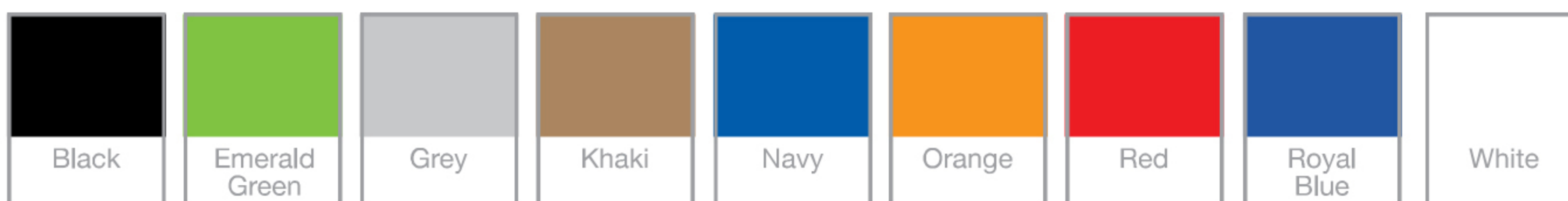
# STANDARD WORK JACKET

STANDARD FIT

CODE: OJ12943



## IN STOCK



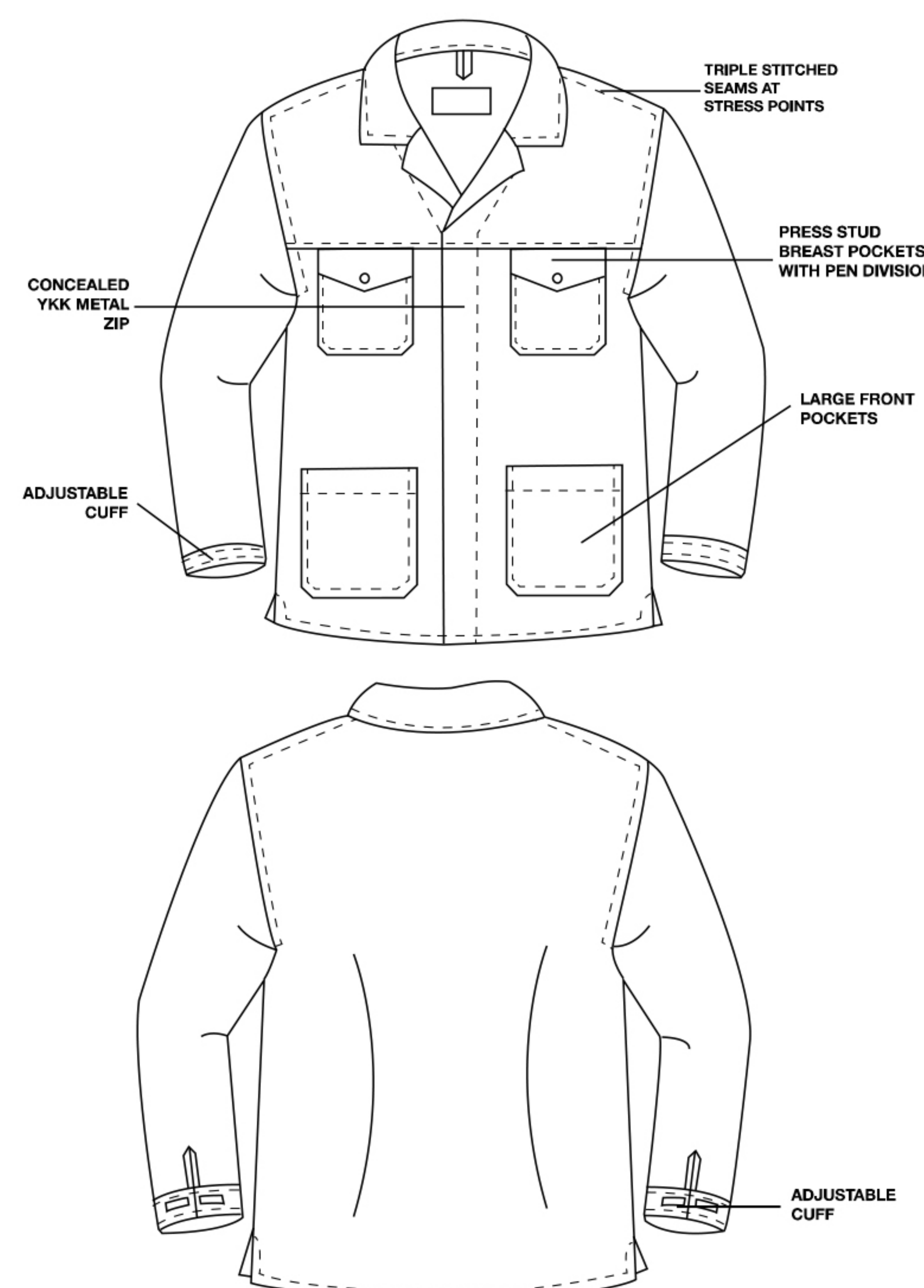
- FABRIC:** • 65/35 POLY COTTON
- WEIGHT:** • 235 gsm
- SIZES:** • 32 | 34 | 36 | 38 | 40 | 42 | 44 | 46 | 48 | 50 | 52 | 54 | 56

- CLOSURES:** • Concealed YKK aluminium zip - Type 5 | Adjustable velcro cuffs for individual preference

- POCKETS:** • Press stud breast pockets with pen division | Extended large front pockets

- STITCHING:** • Triple stitched throughout for enhanced durability | Bar tacked at stress points for extra strength

- COMFORT:** • Side slit allowance for ease of movement | Shaped to flatter the female body



YKK ZIP



TRIPLE STITCHING

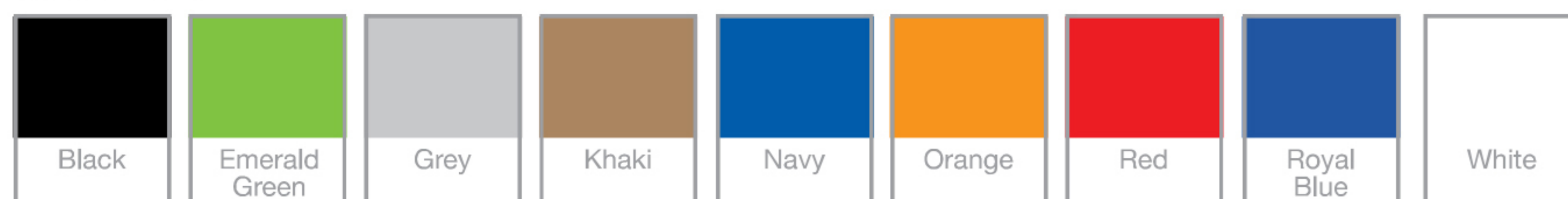
# STANDARD WORK TROUSERS

STANDARD FIT

CODE: OT12947



## IN STOCK



**FABRIC:** • 65/35 POLY COTTON

**WEIGHT:** • 235 gsm

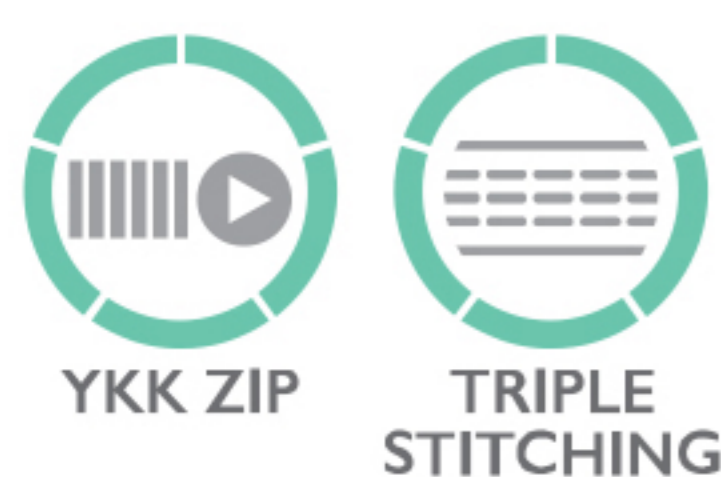
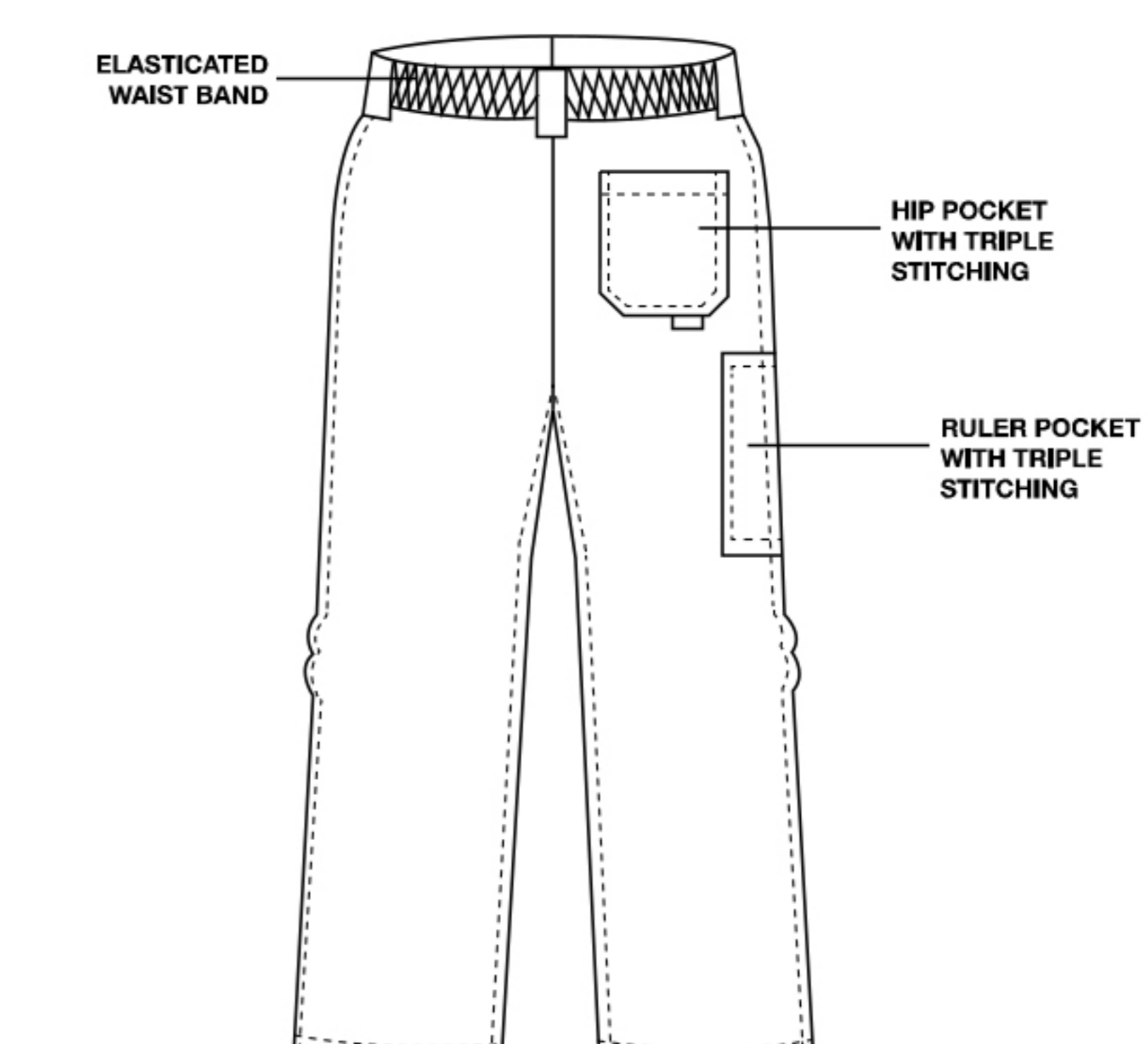
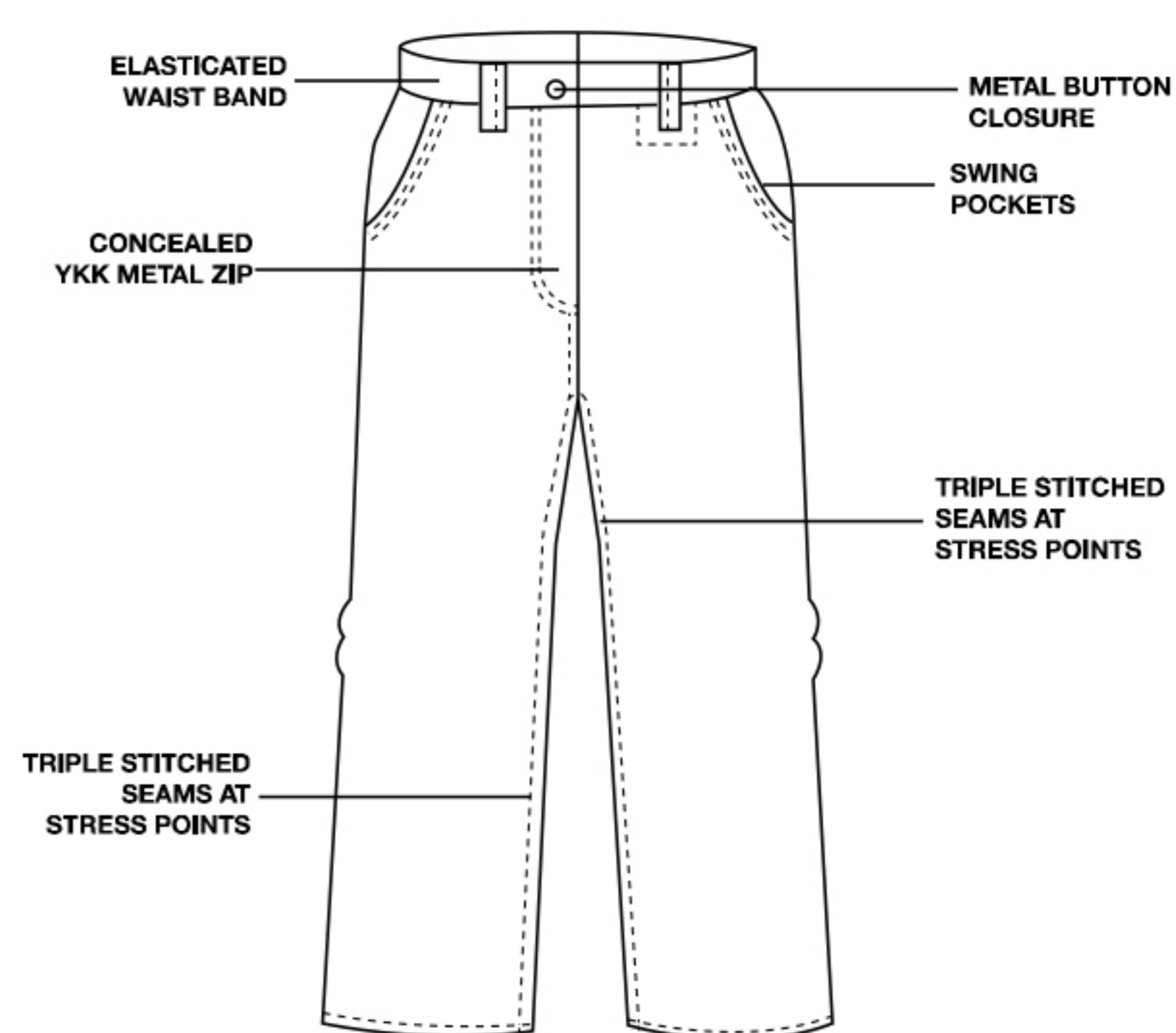
**SIZES:** • 28 | 30 | 32 | 34 | 36 | 38 | 40 | 42 | 44 | 46 | 48 | 50 | 52 | 54 | 56

**CLOSURES:** • Concealed YKK aluminium zip - Type 3 | Metal button

**POCKETS:** • Front swing pockets | Back hip pocket | Ruler pocket

**STITCHING:** • Triple stitched throughout for enhanced durability | Bar tacked at stress points for extra strength

**COMFORT:** • Elasticated waist band



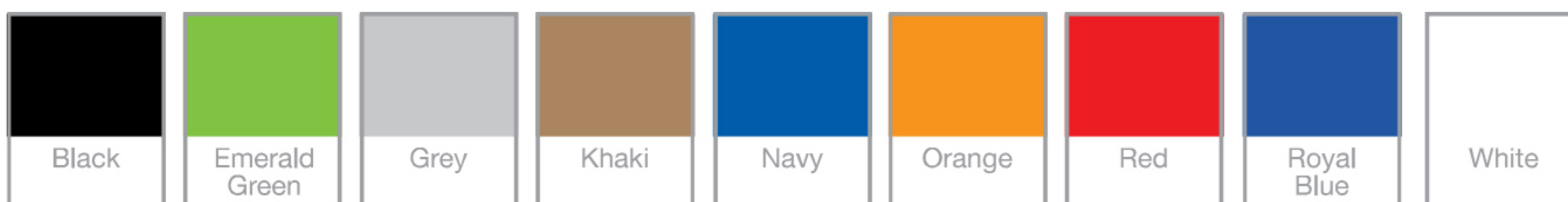
# TRI-REFLECT WORK JACKET

STANDARD FIT

CODE: OJ12942

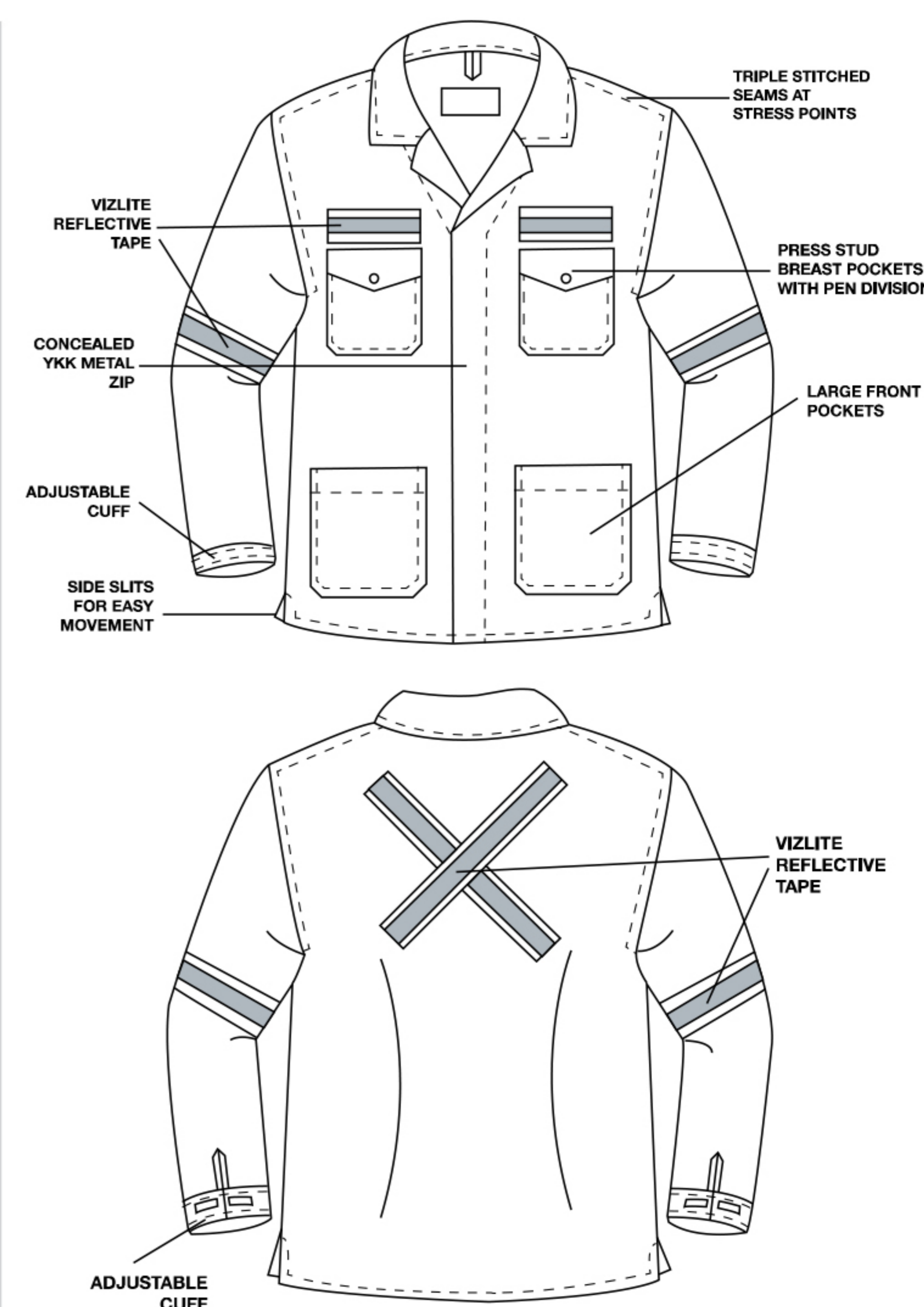


## IN STOCK



- FABRIC:** • 65/35 POLY COTTON
- WEIGHT:** • 235 gsm
- SIZES:** • 32 | 34 | 36 | 38 | 40 | 42 | 44 | 46 | 48 | 50 | 52 | 54 | 56

- REFLECTIVE:** • 19 mm VizLite™ reflective tape | Lime/Silver/Lime
- CLOSURES:** • Concealed YKK brass zip - Type 5 | Adjustable cuffs
- POCKETS:** • Press stud breast pockets with pen division | Extended large front pockets
- STITCHING:** • Triple stitched stress seams for enhanced durability | Bar tacked at stress points for extra strength
- COMFORT:** • Side slit allowance for ease of movement | Shaped to flatter the female body



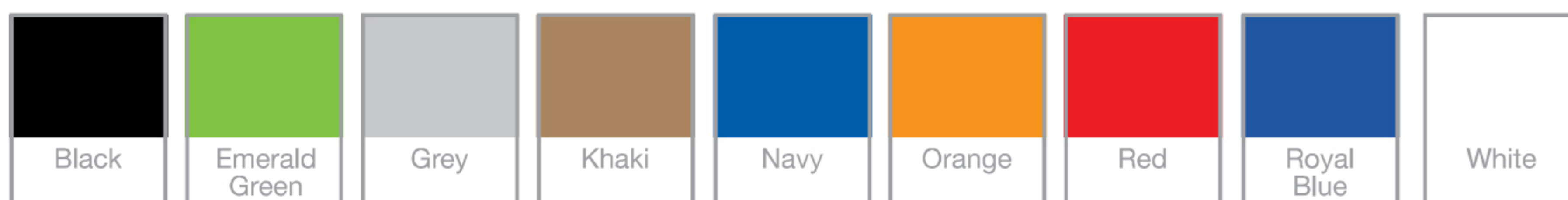
# TRI-REFLECT WORK TROUSERS

STANDARD FIT

CODE: OT12946



## IN STOCK



### FABRIC:

- 65/35 POLY COTTON

### WEIGHT:

- 235 gsm

### SIZES:

- 28 | 30 | 32 | 34 | 36 | 38 | 40 | 42 | 44 | 46 | 48 | 50 | 52 | 54 | 56

### REFLECTIVE:

- 19 mm VizLite™ reflective tape | Lime/Silver/Lime

### CLOSURES:

- Concealed YKK brass zip - Type 3 | Metal button

### POCKETS:

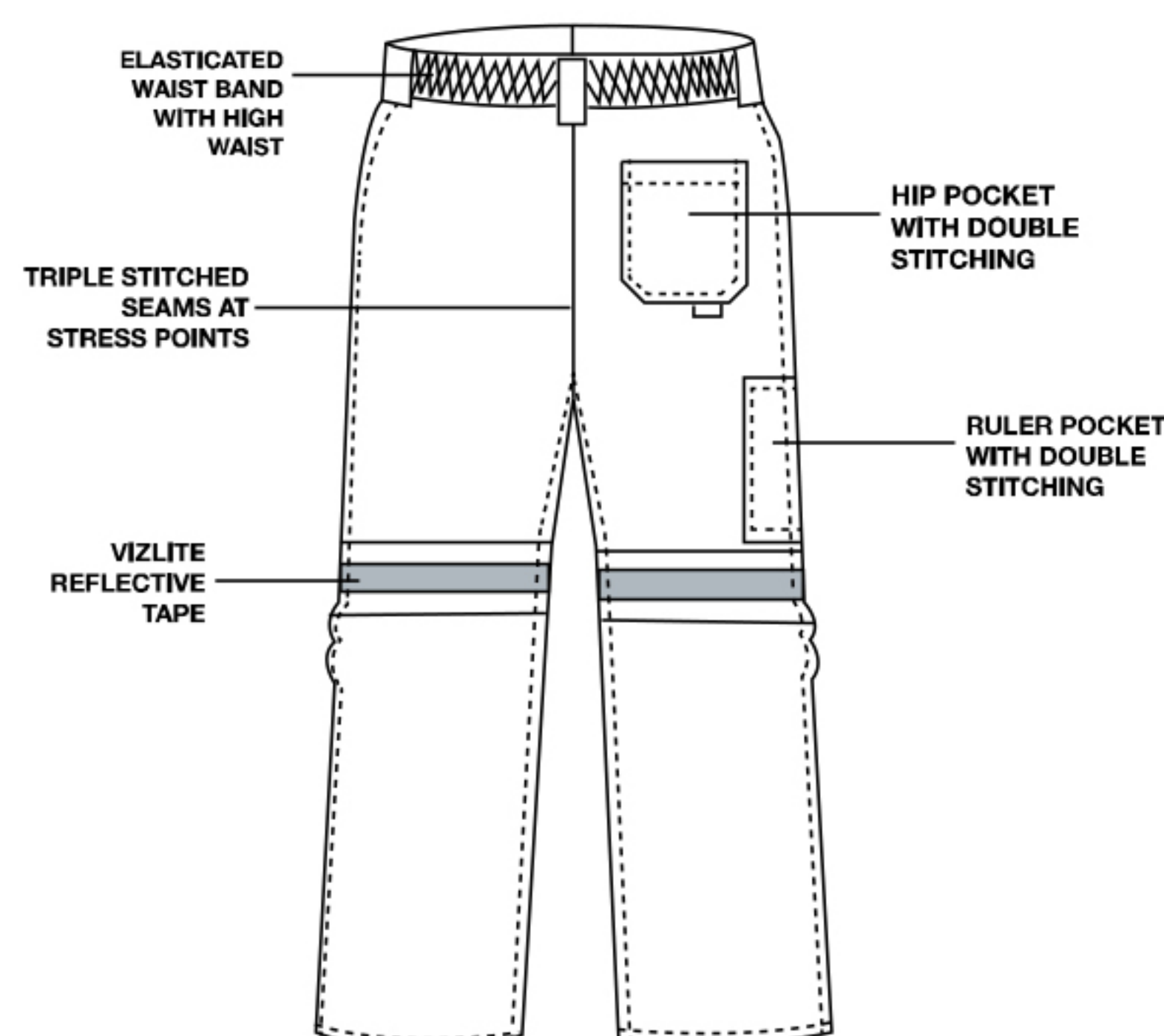
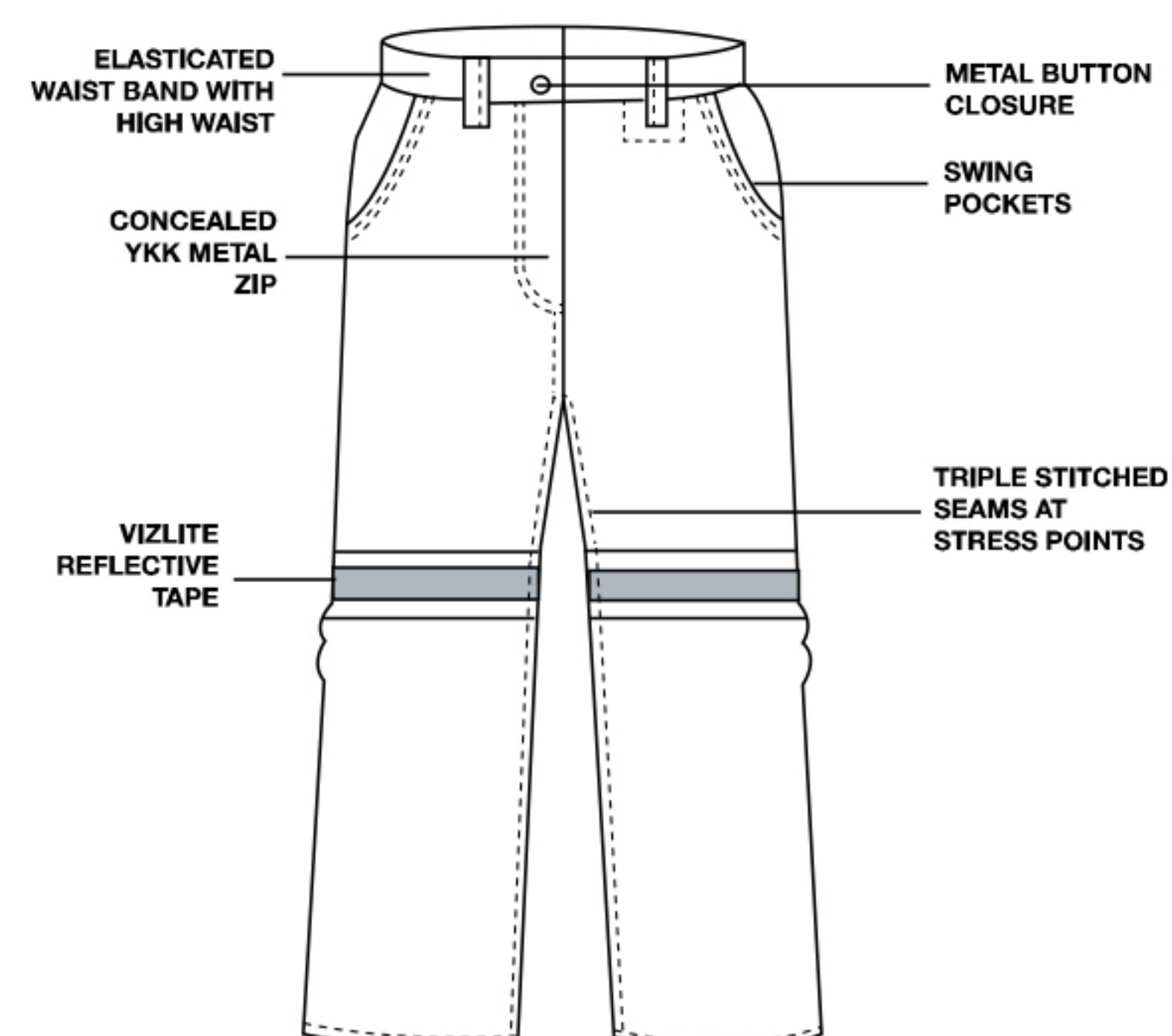
- Front swing pockets | Back hip pocket | Ruler pocket

### STITCHING:

- Triple stitched stress seams plus enhanced durability | Bar tacked at stress points for extra strength

### COMFORT:

- Elasticated waist band



YKK ZIP



VIZLITE™



TRIPLE STITCHING

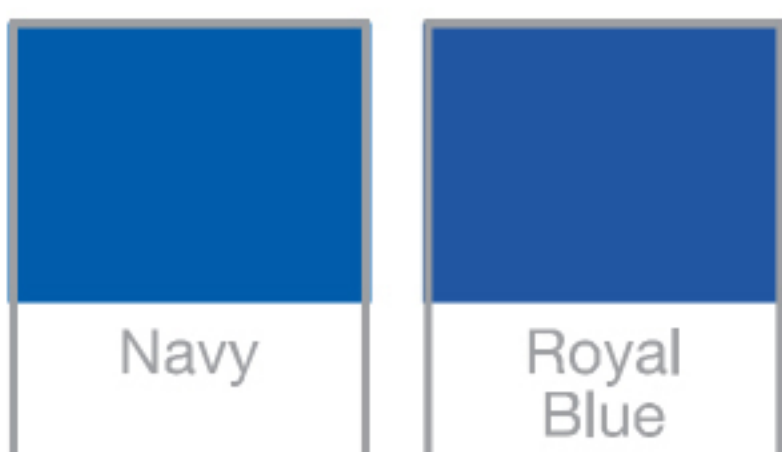
# REFLECTIVE WORK JACKET

EXTENDED FIT

CODE: OJ12944

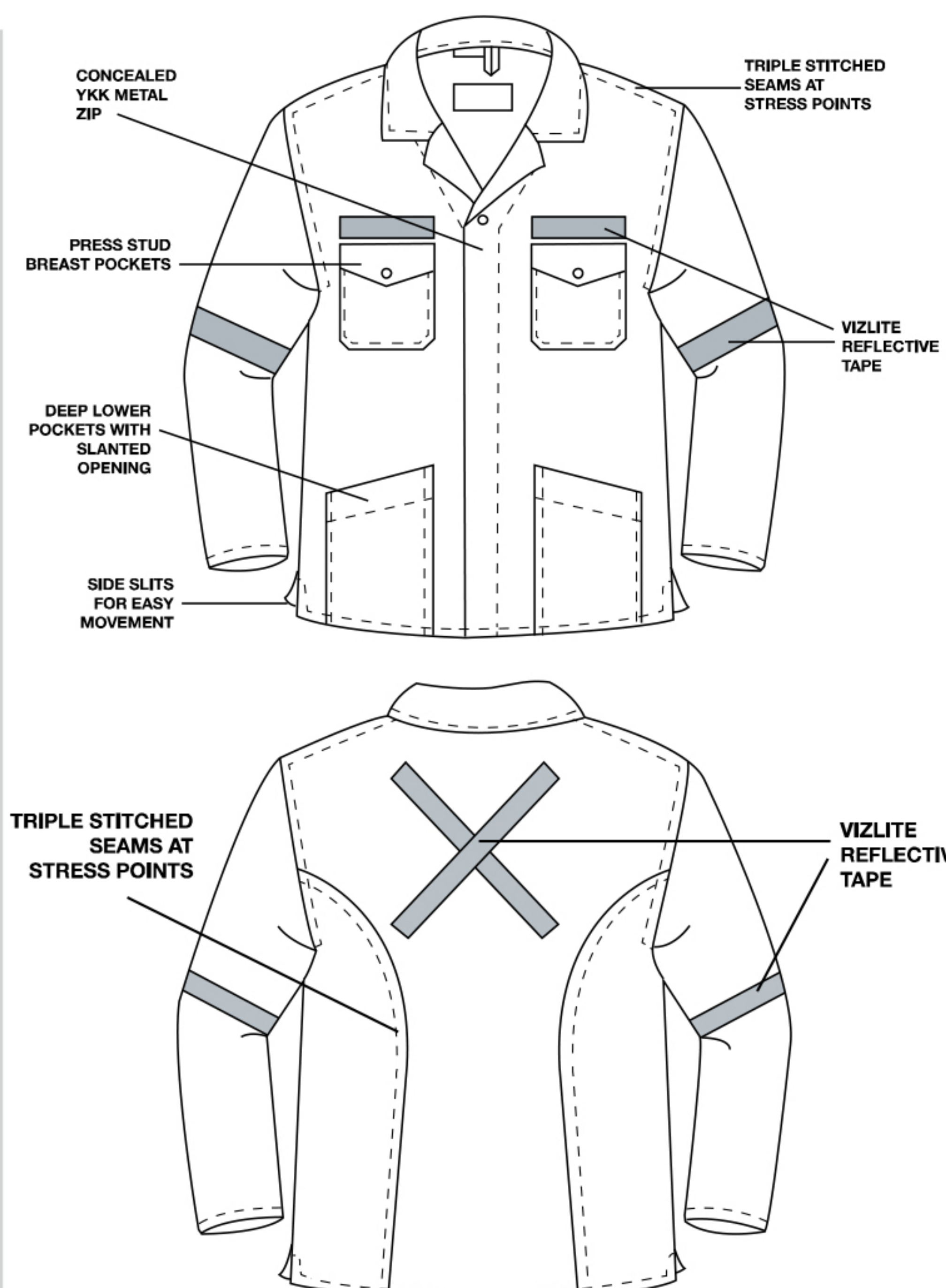


## IN STOCK



- FABRIC:** • J54 100% COTTON
- WEIGHT:** • 220 gsm
- SIZES:** • 32 | 34 | 36 | 38 | 40 | 42 | 44 | 46 | 48 | 50 | 52 | 54 | 56

- REFLECTIVE:** • 25 mm VizLite™ reflective tape
- CLOSURES:** • Concealed YKK aluminium zip - Type 5
- POCKETS:** • Press stud breast pockets | Large front pockets
- STITCHING:** • Triple stitched stress seams for enhanced durability | Bar tacked at stress points for extra strength
- COMFORT:** • Side slit allowance for ease of movement | Extended cut to accommodate for bust area and provide enhanced back flexibility | Shaped to flatter the female body



100%  
COTTON

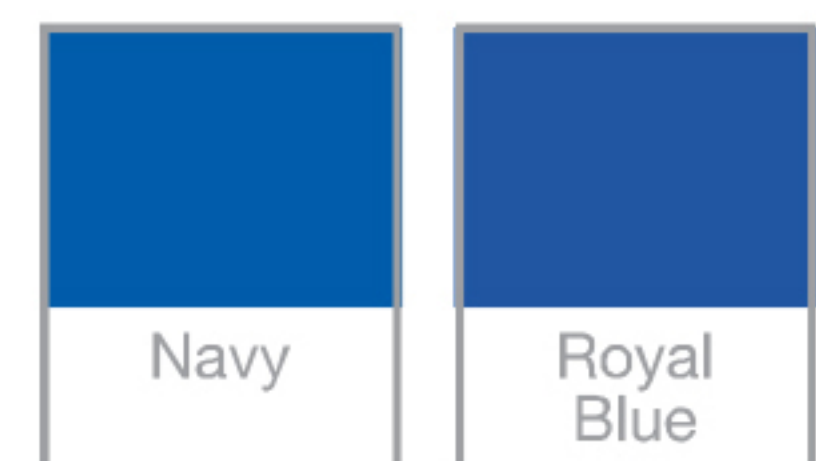
# DURAFIT REFLECTIVE WORK TROUSERS

EXTENDED FIT

CODE: OT | 2948

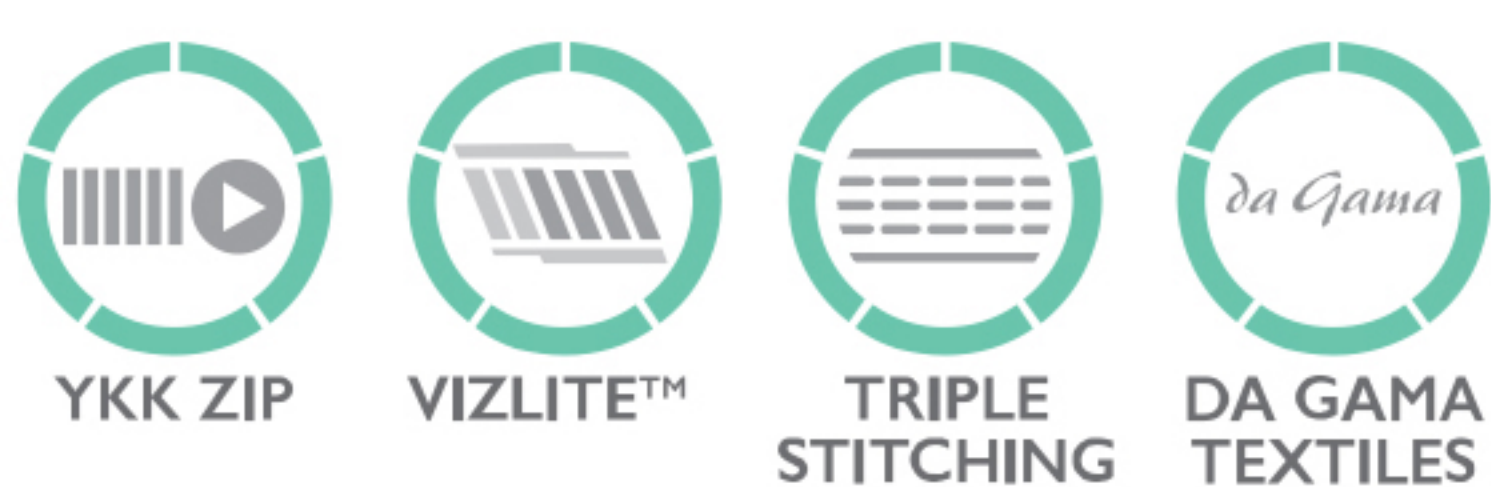
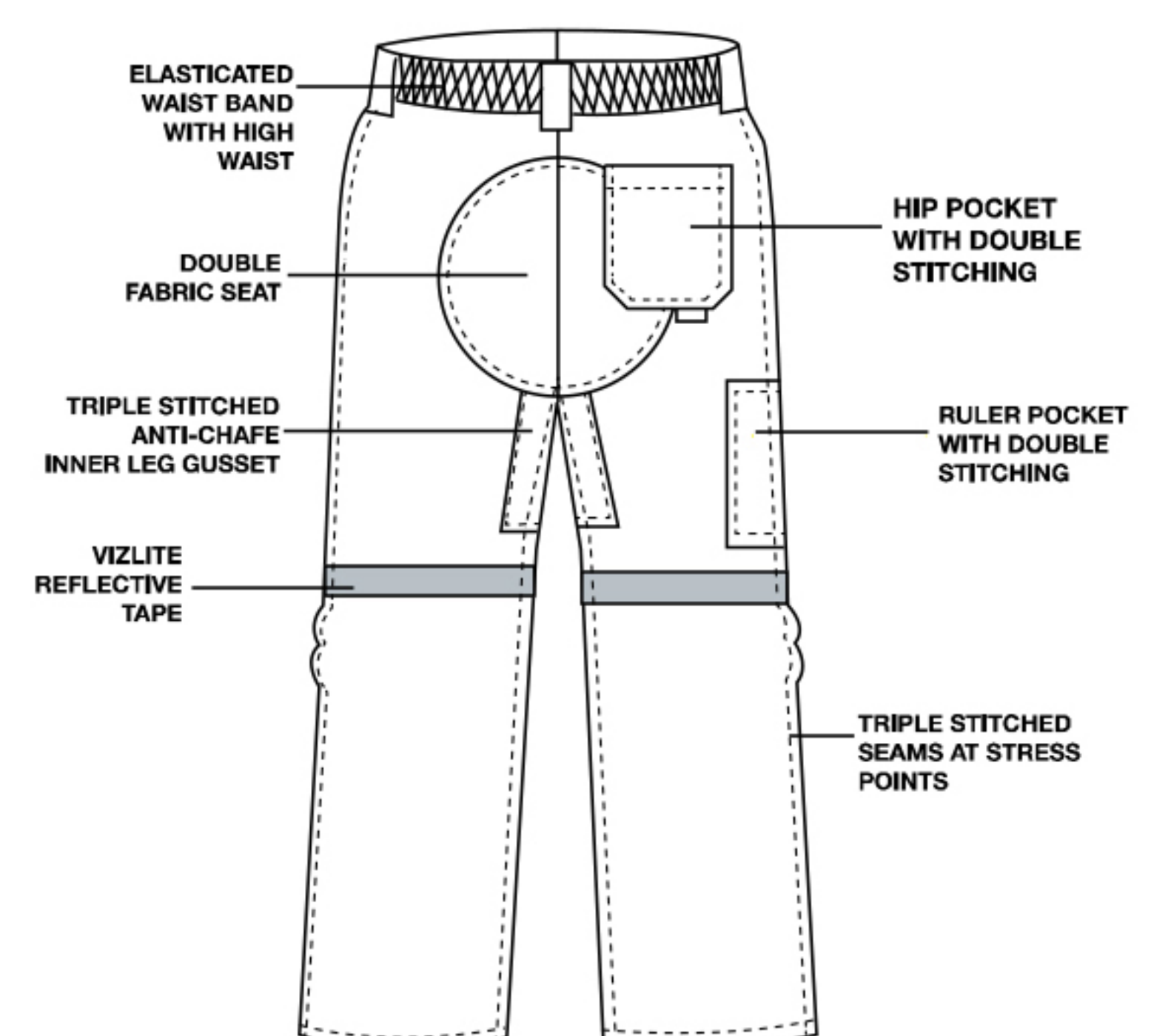
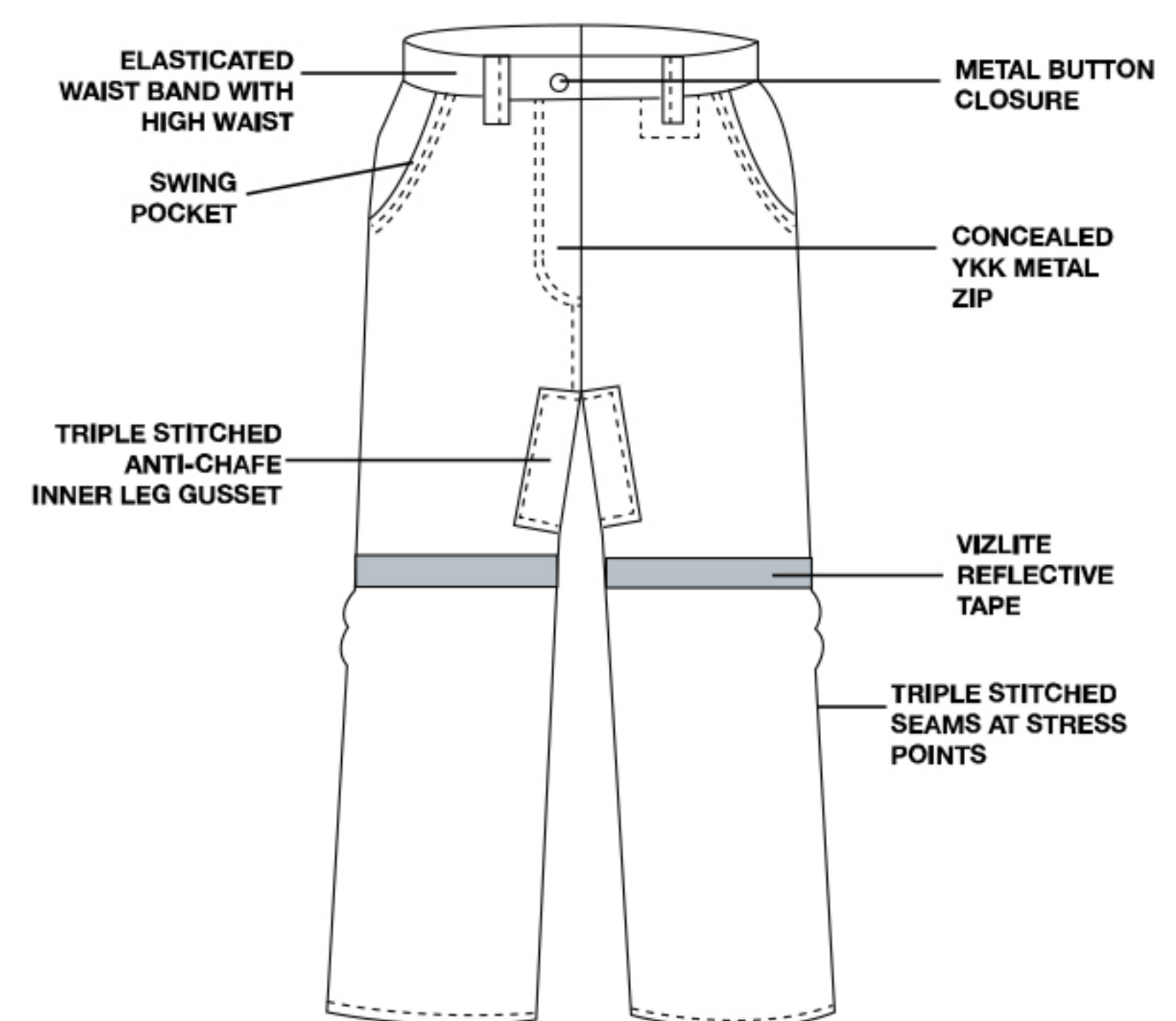


IN STOCK



- FABRIC:** • **J54 100% COTTON**
- WEIGHT:** • 220 gsm
- SIZES:** • 28 | 30 | 32 | 34 | 36 | 38 | 40 | 42 | 44 | 46 | 48 | 50 | 52 | 54 | 56

- REFLECTIVE:** • 25 mm VizLite™ reflective tape
- CLOSURES:** • Concealed YKK aluminium zip - Type 3 | Metal button
- POCKETS:** • Front swing pockets | Back hip pocket | Ruler pocket
- STITCHING:** • Triple stitched stress seams for enhanced durability | Bar tacked at stress points for extra strength
- COMFORT & DURABILITY:** • Elasticated waist band | Double fabric on seat area for extra cushioning and durability | High-waisted to prevent back or midriff exposure | Extra thigh space for flexibility | Anti-chafe inner leg gusset for increased durability



100% COTTON

# REFLECTIVE WORK JACKET

EXTENDED FIT

CODE: OJ13084



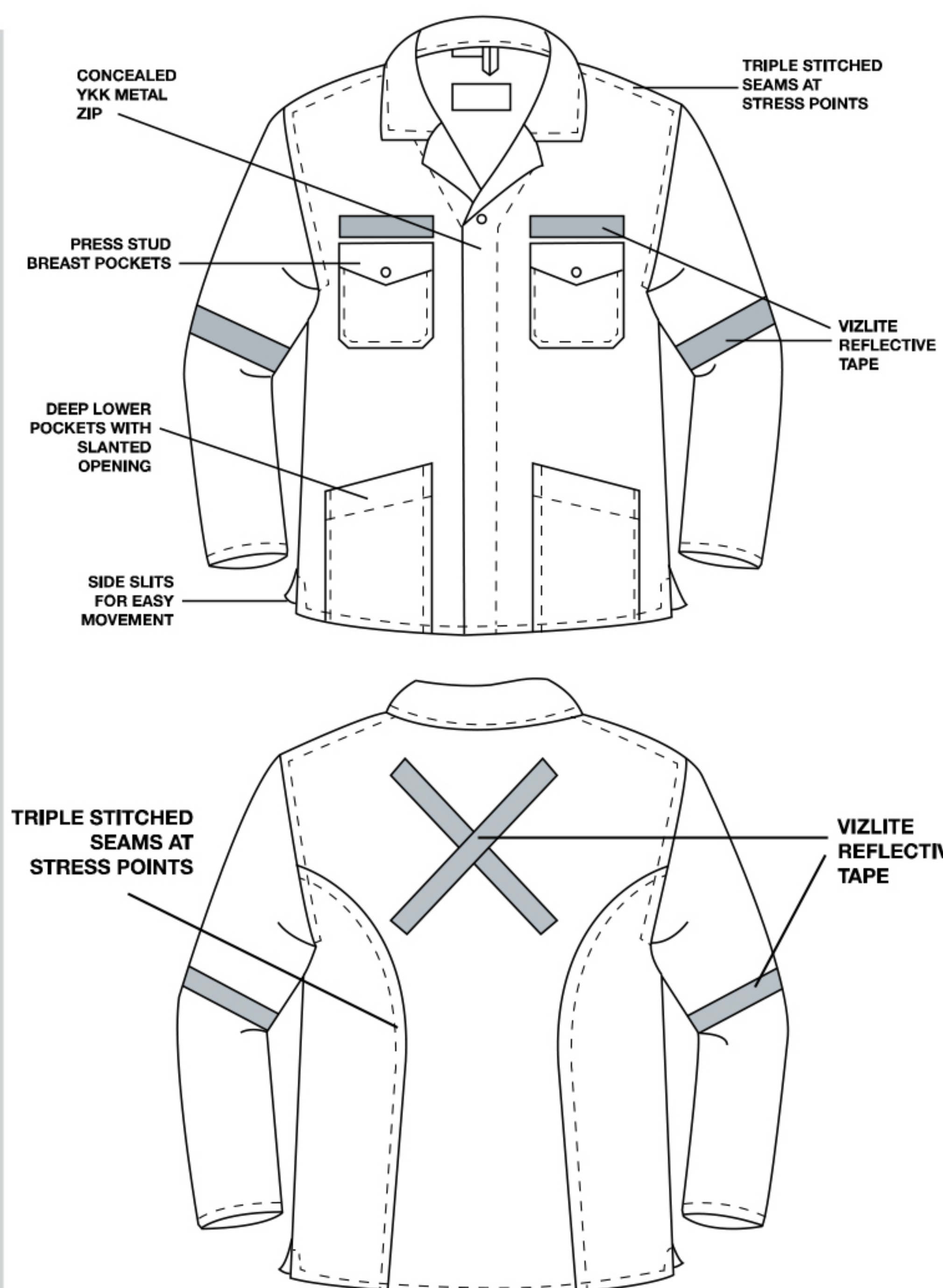
## MADE TO ORDER



Fern Green

- FABRIC:** • D59 100% COTTON FLAME RETARDANT
- WEIGHT:** • 220 gsm
- SIZES:** • 32 | 34 | 36 | 38 | 40 | 42 | 44 | 46 | 48 | 50 | 52 | 54 | 56

- REFLECTIVE:** • 25 mm VizLite™ reflective tape
- CLOSURES:** • Concealed YKK Brass zip - Type 5
- POCKETS:** • Press stud breast pockets | Large front pockets
- STITCHING:** • Triple stitched stress seams for enhanced durability | Bar tacked at stress points for extra strength
- COMFORT:** • Side slit allowance for ease of movement | Extended cut to accommodate for bust area and provide enhanced back flexibility | Shaped to flatter the female body



# DURAFIT REFLECTIVE WORK TROUSERS

EXTENDED FIT

CODE: OT | 3083

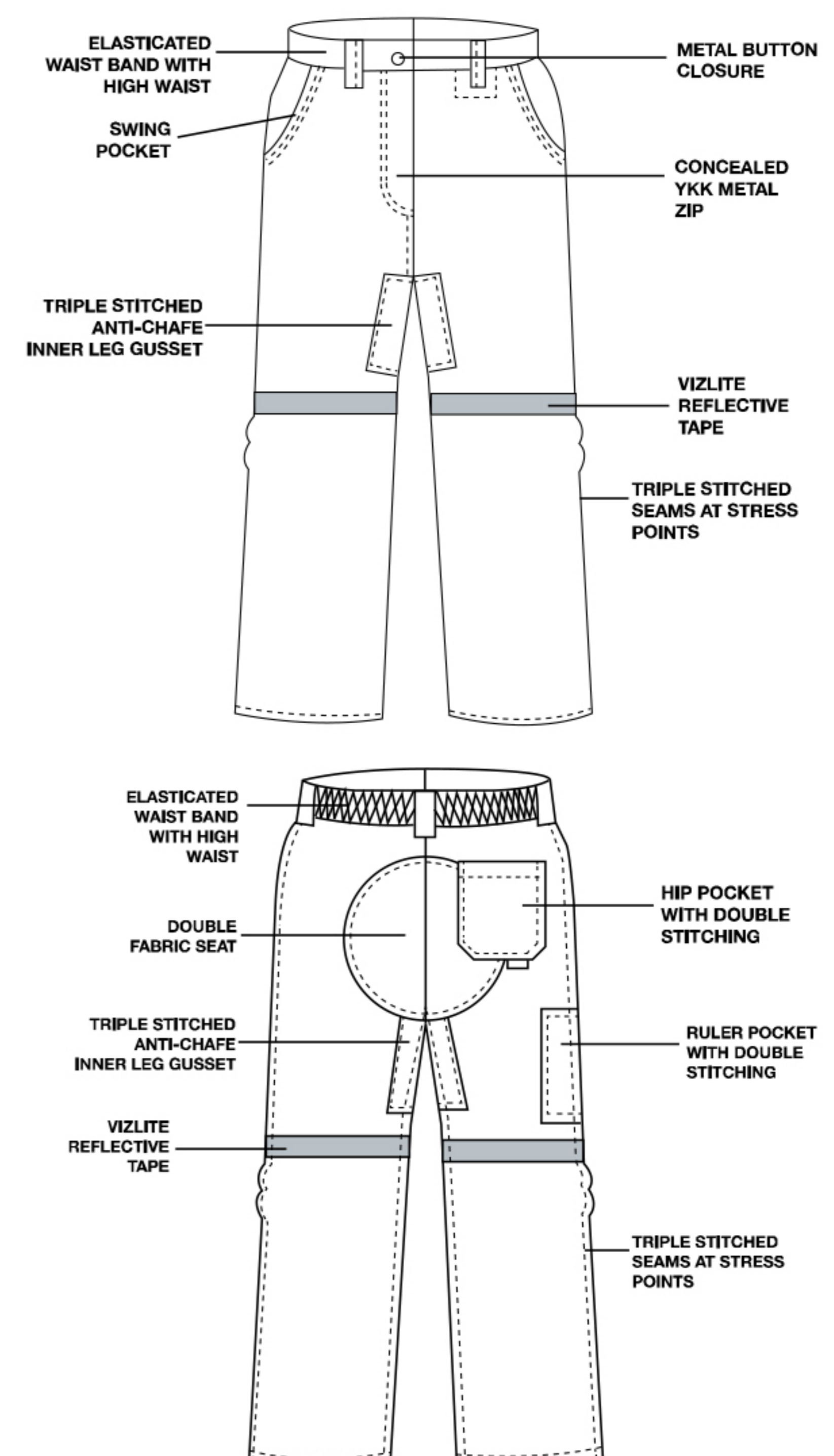


MADE TO ORDER

Fern Green

- FABRIC:** • **D59 100% COTTON FLAME RETARDANT**
- WEIGHT:** • 220 gsm
- SIZES:** • 28 | 30 | 32 | 34 | 36 | 38 | 40 | 42 | 44 | 46 | 48 | 50 | 52 | 54 | 56

- REFLECTIVE:** • 25 mm VizLite™ reflective tape
- CLOSURES:** • Concealed YKK brass zip - Type 3
- POCKETS:** • Front swing pockets | Back hip pocket | Ruler pocket
- STITCHING:** • Triple stitched stress seams plus enhanced durability | Bar tacked at stress points for extra strength
- COMFORT & DURABILITY:** • Elasticated waist band | Double fabric on seat area for extra cushioning and durability | High-waisted to prevent back or midriff exposure | Extra thigh space for flexibility | Anti-chafe inner leg gusset for increased durability



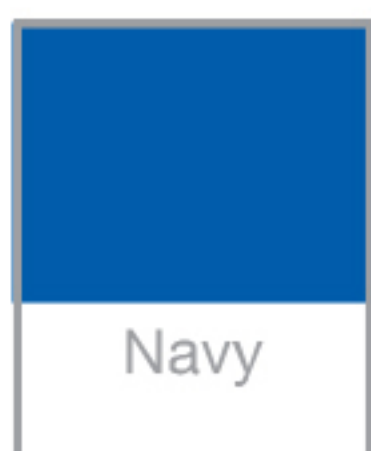
# REFLECTIVE WORK JACKET

EXTENDED FIT

CODE: OJ13222

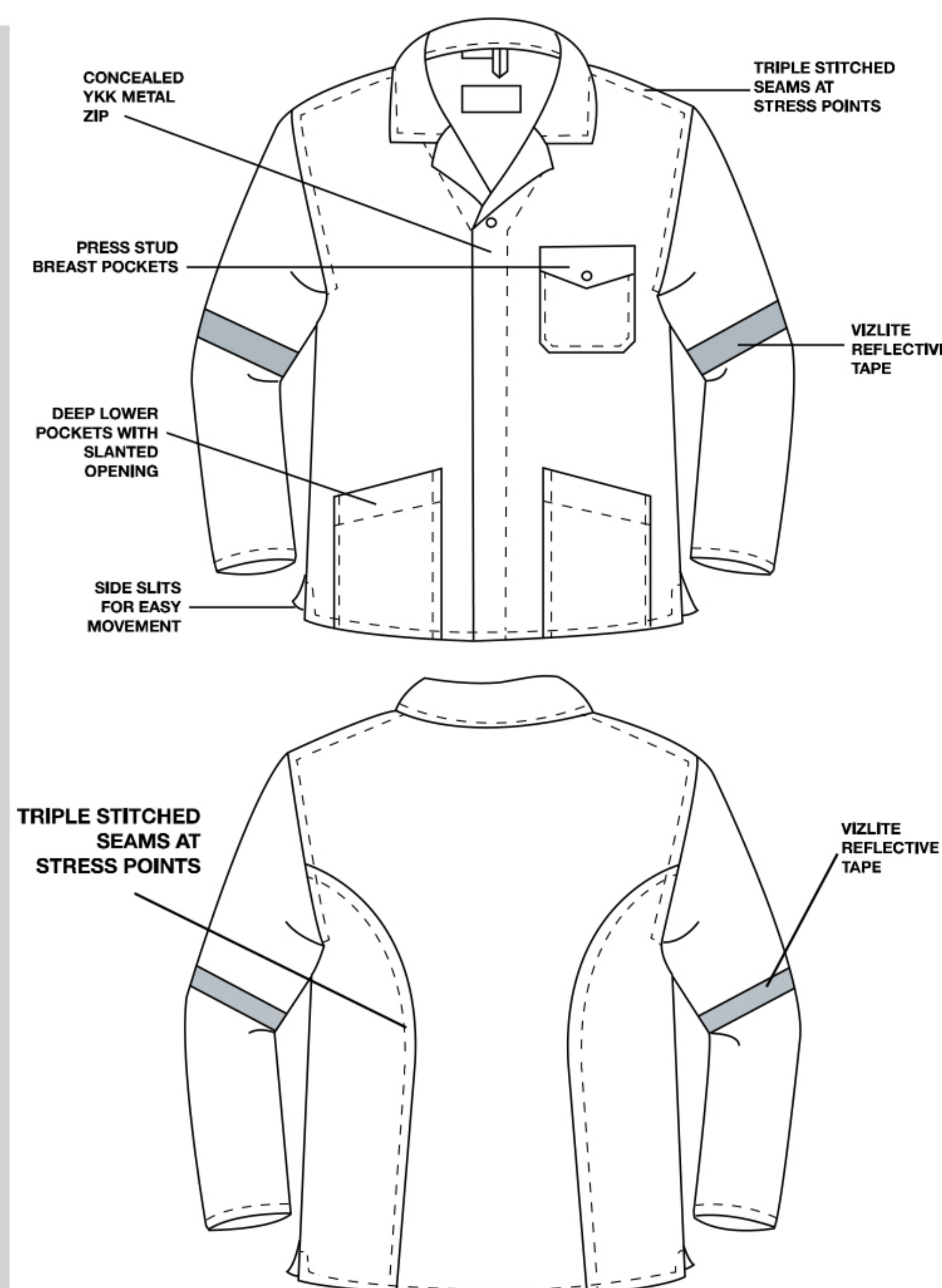


IN STOCK



MTO

- FABRIC:** • D59 100% COTTON FLAME RETARDANT AND ACID RESISTANT
- WEIGHT:** • 300 gsm
- SIZES:** • 32 | 34 | 36 | 38 | 40 | 42 | 44 | 46 | 48 | 50 | 52 | 54 | 56 | 58 | 60
- 
- REFLECTIVE:** • 48mm VizLite™ reflective tape
- CLOSURES:** • Concealed YKK brass zip – Type 5 | Adjustable cuffs
- POCKETS:** • Press stud breast pocket with pen division | Large front pockets
- STITCHING:** • Triple stitched stress seams for enhanced durability | Bar tacked at stress points for extra strength
- COMFORT:** • Side slit allowance for ease of movement | Extended cut to accommodate for bust area and provide enhanced back flexibility | Shaped to flatter the female body



# REFLECTIVE WORK TROUSERS

EXTENDED FIT

CODE: OT13221

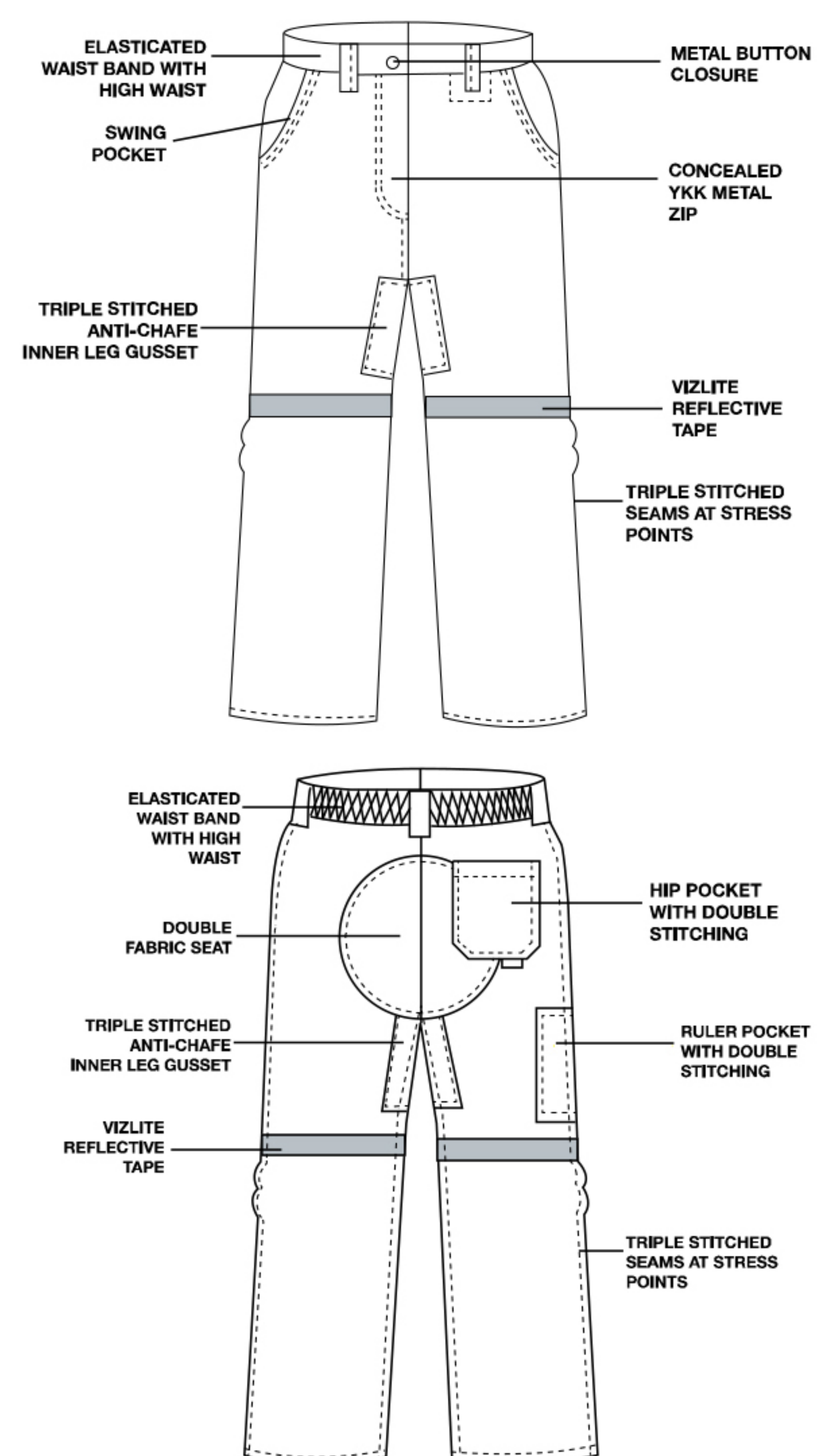


MTO

IN STOCK



- FABRIC:**
  - **D59 100% COTTON FLAME RETARDANT AND ACID RESISTANT**
- WEIGHT:**
  - 300 gsm
- SIZES:**
  - 28 | 30 | 32 | 34 | 36 | 38 | 40 | 42 | 44 | 46 | 48 | 50 | 52 | 54 | 56
- REFLECTIVE:**
  - 48mm VizLite™ reflective tape
- CLOSURES:**
  - Concealed YKK brass zip – Type 3 | Metal button
- POCKETS:**
  - Front swing pockets | Front money pocket | Ruler pocket | Back hip pocket
- STITCHING:**
  - Triple stitched stress seams for enhanced durability | Bar tacked at stress points for extra strength
- COMFORT & DURABILITY:**
  - Elasticated waist band | Double fabric on seat area for extra cushioning and durability | High-waisted to prevent back or midriff exposure | Extra thigh space for flexibility | Anti-chafe inner leg gusset for increased durability



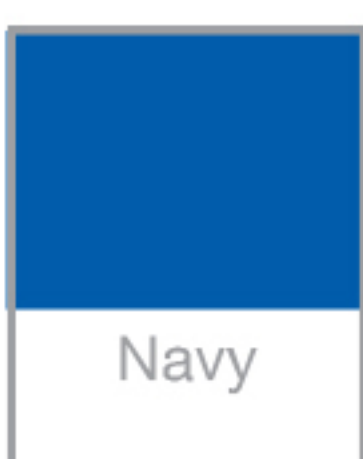
# MATERNITY TRI-REFLECT WORK JACKET

MATERNITY FIT

CODE: OJ13079



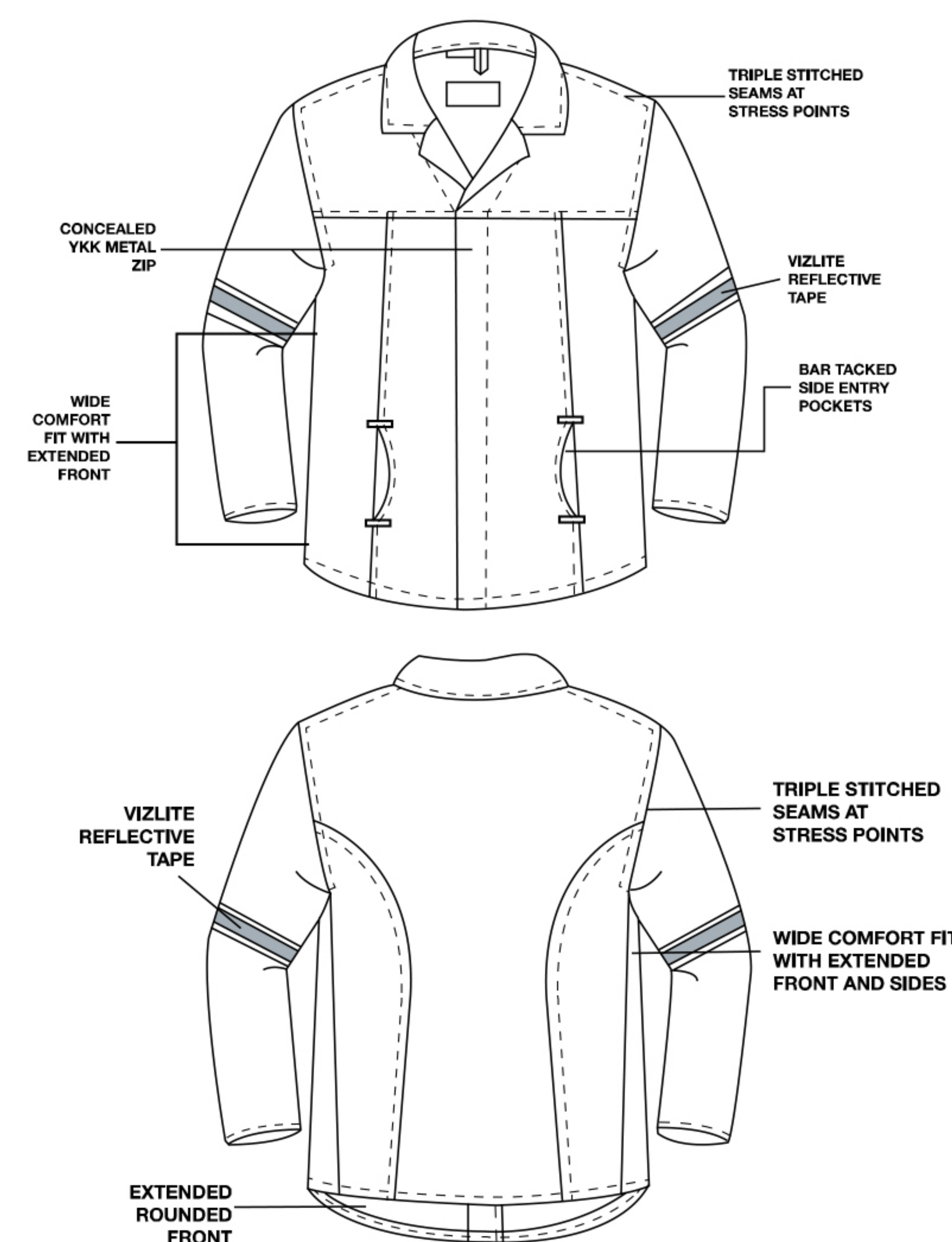
## MADE TO ORDER



Navy

- FABRIC:** • J54 100% COTTON
- WEIGHT:** • 220 gsm
- SIZES:** • 32 | 34 | 36 | 38 | 40 | 42 | 44 | 46 | 48 | 50 | 52 | 54 | 56

- REFLECTIVE:** • 19 mm VizLite™ reflective tape | Lime/Silver/Lime
- CLOSURES:** • Concealed YKK brass zip - Type 5
- POCKETS:** • Front slide in pockets
- STITCHING:** • Triple stitched stress seams for enhanced durability | Bar tacked at stress points for extra strength
- COMFORT:** • Extended front and sides to accommodate for a growing bust and belly area | Wide panels at the back for flexibility



100%  
COTTON

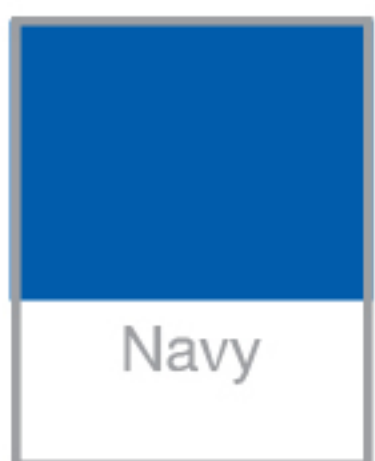
# MATERNITY TRI-REFLECT WORK TROUSERS

MATERNITY FIT

CODE: OT13080

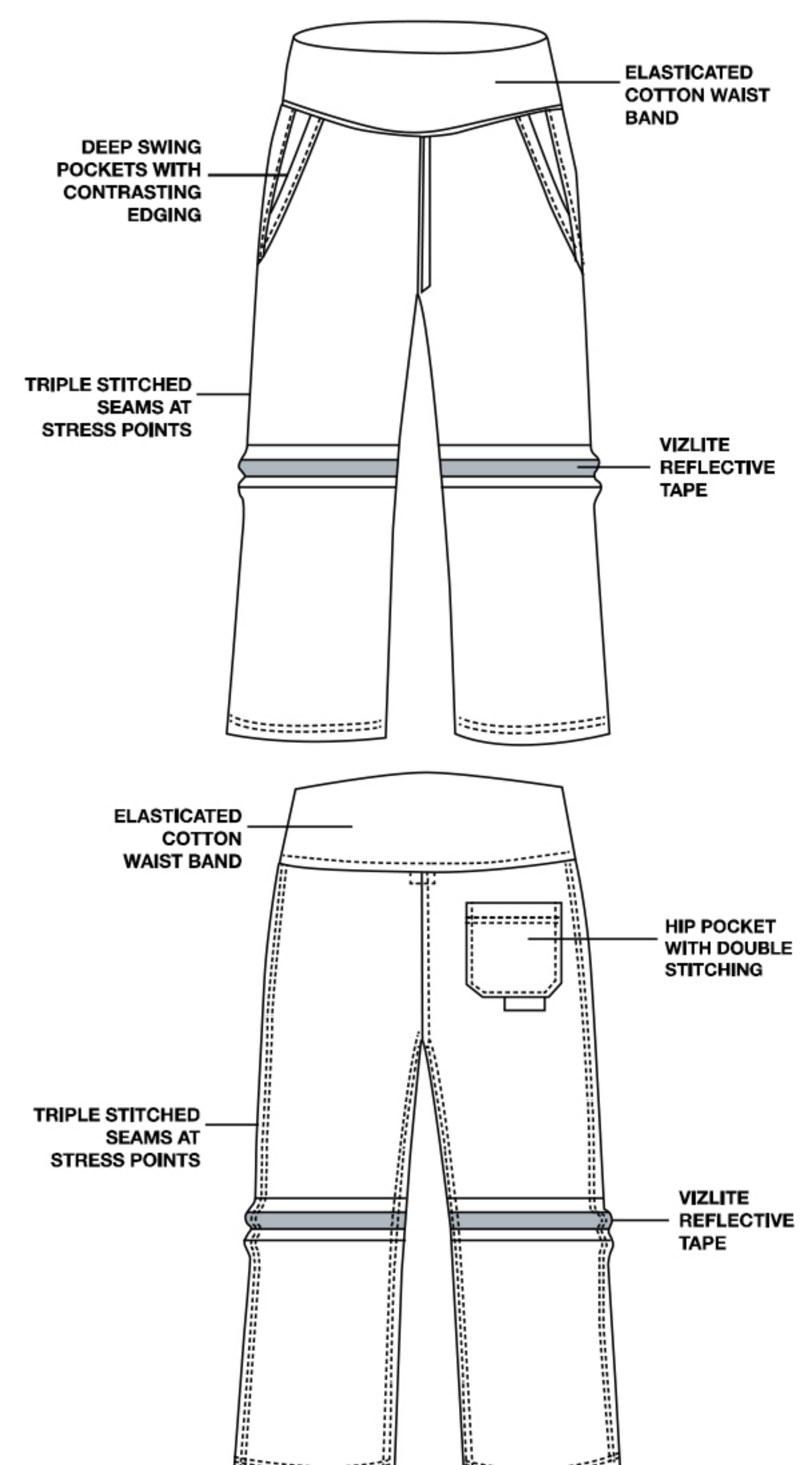


MADE TO ORDER



Navy

- FABRIC:** • J54 100% COTTON
- WEIGHT:** • 220 gsm
- SIZES:** • 28 | 30 | 32 | 34 | 36 | 38 | 40 | 42 | 44 | 46 | 48 | 50 | 52 | 54 | 56
- 
- REFLECTIVE:** • 19 mm VizLite™ reflective tape | Lime/Silver/Lime
- CLOSURES:** • Concealed YKK brass zip - Type 3 | Metal button
- POCKETS:** • Deep swing pockets | Back hip pocket
- STITCHING:** • Triple stitched stress seams for enhanced durability | Bar tacked at stress points for extra strength
- COMFORT:** • Cotton-knit insert at side seams and broad knitted cotton waist band provides increased comfort for a growing belly | Extra thigh space for flexibility



YKK ZIP



VIZLITE™



TRIPLE STITCHING



DA GAMA TEXTILES

100% COTTON

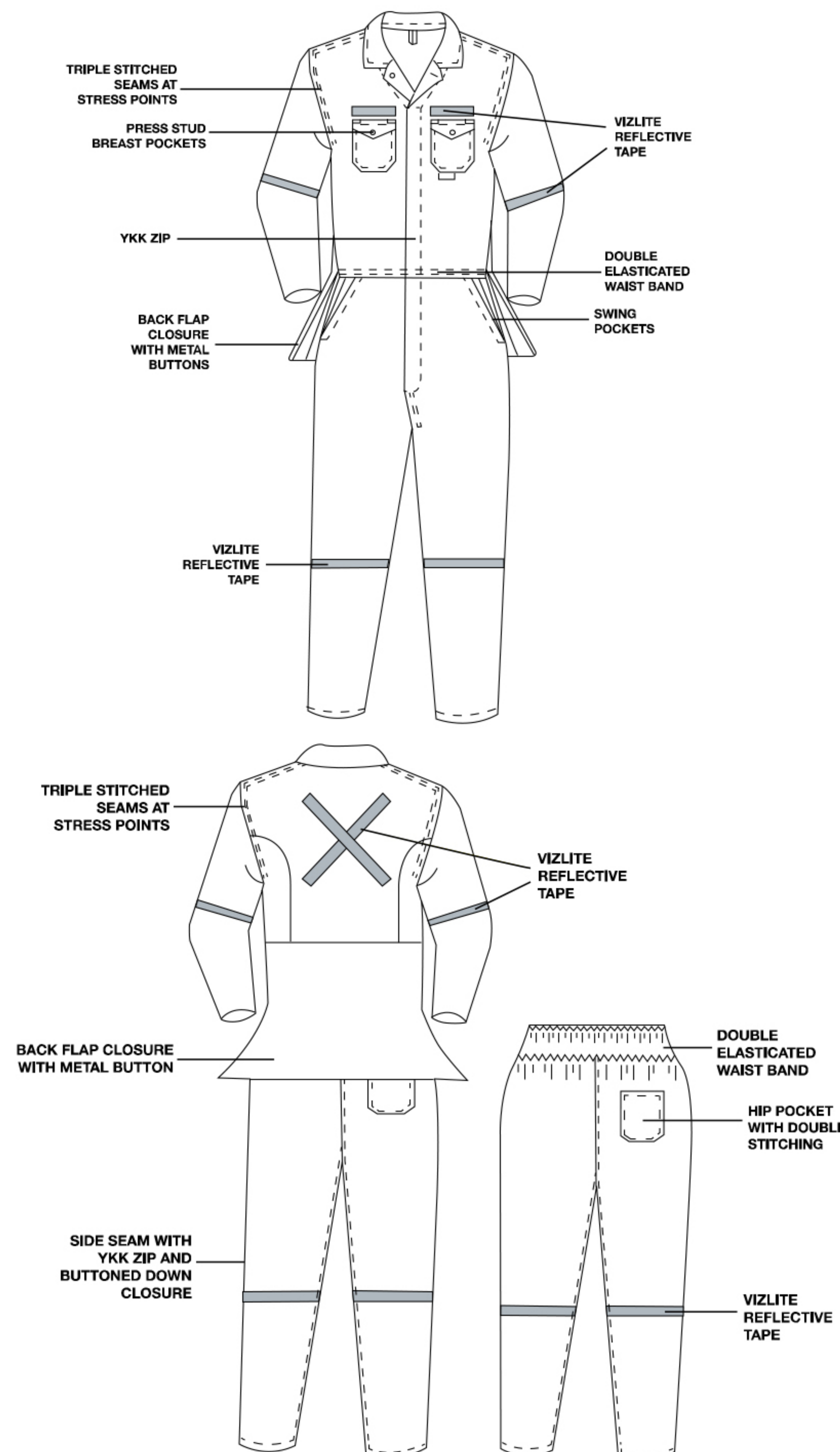
# DURAFIT REFLECTIVE BOILER SUIT

EXTENDED FIT

CODE: OBI294I



IN STOCK



- FABRIC:** • J54 100% COTTON
- WEIGHT:** • 220 gsm
- SIZES:** • 28 | 30 | 32 | 34 | 36 | 38 | 40 | 42 | 44 | 46 | 48 | 50 | 52 | 54 | 56
- 
- REFLECTIVE:** • 25 mm VizLite™ reflective tape
- CLOSURES:** • Concealed YKK brass zip - Type 3 | Metal button
- BACK FLAP:** • Side YKK zip closure on thigh area with metal buttons for ease of opening
- POCKETS:** • Press stud breast pockets | Swing pockets | Back hip pocket | Ruler pocket
- STITCHING:** • Triple stitched stress seams for enhanced durability | Bar tacked at stress points for extra strength | Triple stitched seam joining back flap to garment
- COMFORT:** • Concealed elasticated back waist band



100%  
COTTON

SABS  
APPROVED

# SIZE CHART

## JACKETS

### CHEST MEASUREMENTS

<b>INCHES</b>	32	34	36	38	40	42
<b>CM</b>	82	87	92	97	102	107
<b>SIZE</b>	S		M		L	

<b>INCHES</b>	44	46	48	50	52	54	56
<b>CM</b>	112	117	122	127	132	137	142
<b>SIZE</b>	XL		XXL		XXXL		XXXXL

**NOTE:** Jackets and dust coats are to be ordered by chest size and trousers to be ordered by waist size. Use trousers' waist measurement and increase by two sizes to determine corresponding jacket chest size.

## TROUSERS

### WAIST MEASUREMENTS

<b>INCHES</b>	28	30	32	34	36	38	40
<b>CM</b>	72	77	82	87	92	94	102

<b>INCHES</b>	42	44	46	48	50	52	54	56
<b>CM</b>	107	112	117	122	127	132	137	142

**NOTE:** Trousers to be ordered by waist size and jackets to be ordered by chest size. Use trousers' waist measurement and increase by two sizes to determine corresponding jacket chest size.

## BOILER SUIT

### CHEST MEASUREMENTS

<b>INCHES</b>	28	30	32	34	36	38	40	42
<b>CM</b>	72	77	82	87	92	97	102	107
<b>SIZE</b>	XXS	XS	S		M		L	

<b>INCHES</b>	44	46	48	50	52	54	56
<b>CM</b>	112	117	122	127	132	137	142
<b>SIZE</b>	XL		XXL		XXXL		XXXXL

### CORRELATING WAIST MEASUREMENT:

<b>INCHES</b>	28	30	32	34	36	38	40
<b>CM</b>	72	77	82	87	92	94	102

<b>INCHES</b>	42	44	46	48	50	52	54	56
<b>CM</b>	107	112	117	122	127	132	137	142

**NOTE:** Boiler suits to be ordered by chest measurement. Check chest measurement table for corresponding waist size. Use trousers' waist measurement and increase by two sizes to determine corresponding jacket chest size. Made to order items are available after 4 weeks from placement of order.

# COLOUR LEGEND

Navy	NVY
Emerald Green	EME
Grey	GRY
Khaki	KHA
Orange	ORG
Royal Blue	RBL
Red	RED
Fern Green	FRG
Unbleached/Navy	UNY
White	WHT
Black	BLK

To ensure that we receive your order correctly and that it is processed without delay, we ask that you use the following ordering process: STOCK CODE - COLOUR - SIZE  
E.g. To order a black work jacket in a size 36, please request: OJ12943 - BLK - 36



# HLATINI

## General

📞 Office: +27 (0)13 764 2279

📠 Fax: +27 (0)13 764 2998

✉ Email: [negry@hlatini.co.za](mailto:negry@hlatini.co.za)

📍 PO Box 646, Sabie, 1260, Mpumalanga South Africa

## Store Manager

📞 Margaret van Rensburg: +27 (0)82 302 1896

✉ Email: [sales@hlatini.co.za](mailto:sales@hlatini.co.za)

## Rep & Customer Relations

📞 Johan van Rensburg: +27 (0)72 648 2588

✉ Email: [johan@hlatini.co.za](mailto:johan@hlatini.co.za)

# WE SUPPLY QUALITY PRODUCTS



[www.HLATINI.co.za](http://www.HLATINI.co.za)